



Referendum Projects

October 17, 2019

Referendum - December 2019

Monhagen

- Basketball/Tennis Courts/Pickleball/Soccer
- Dehumidification – Controls Upgrade

Presidential Park

- Grades 3-5 Playground
- Parking lot, drainage and current playground repair

Twin Towers

- Remove Carpet in 16 Rooms
- Asbestos removal involved w/ existing tiles

Truman Moon

- Sidewalks – Parking lot – Fencing - Lighting

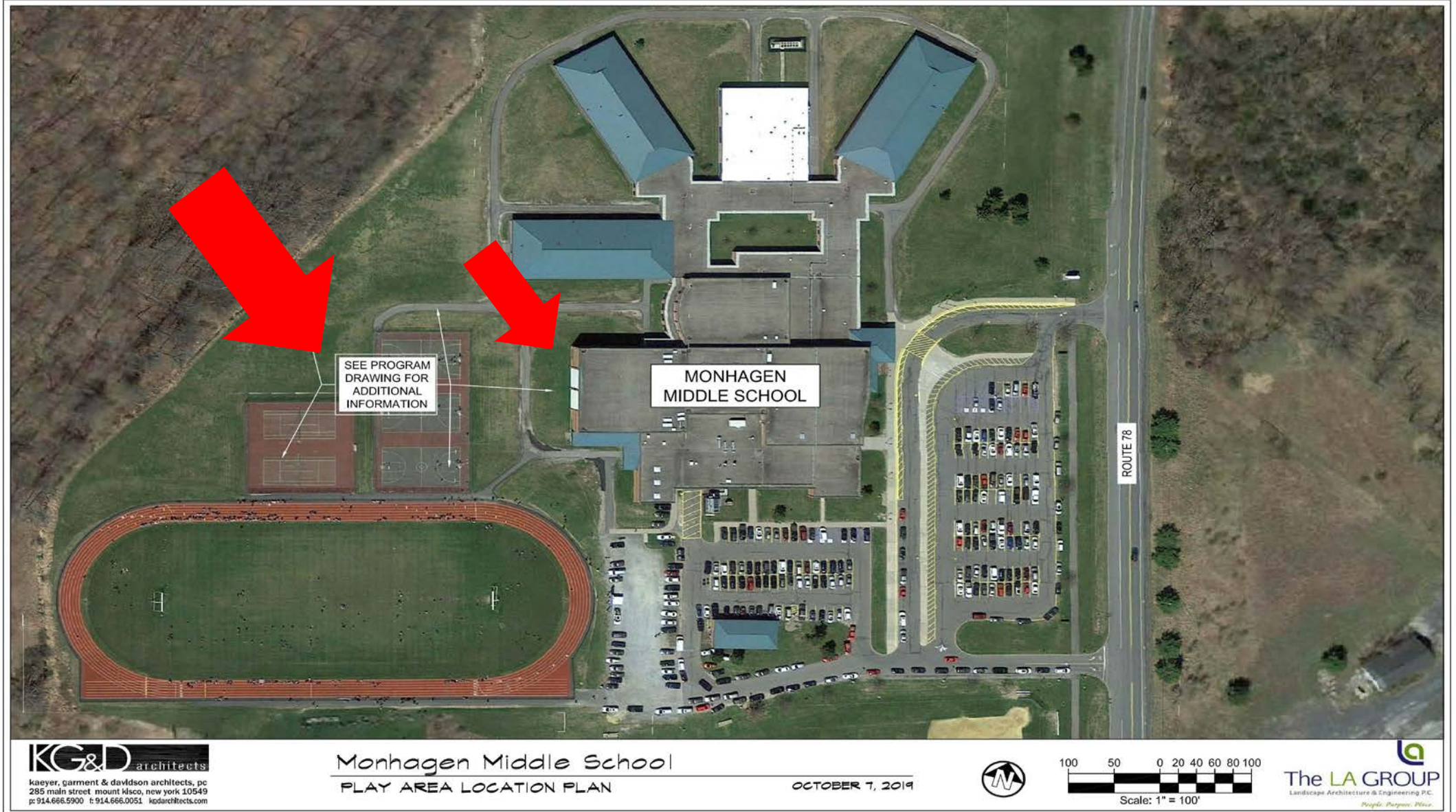
Maple Hill

- Dehumidification – Controls Upgrade

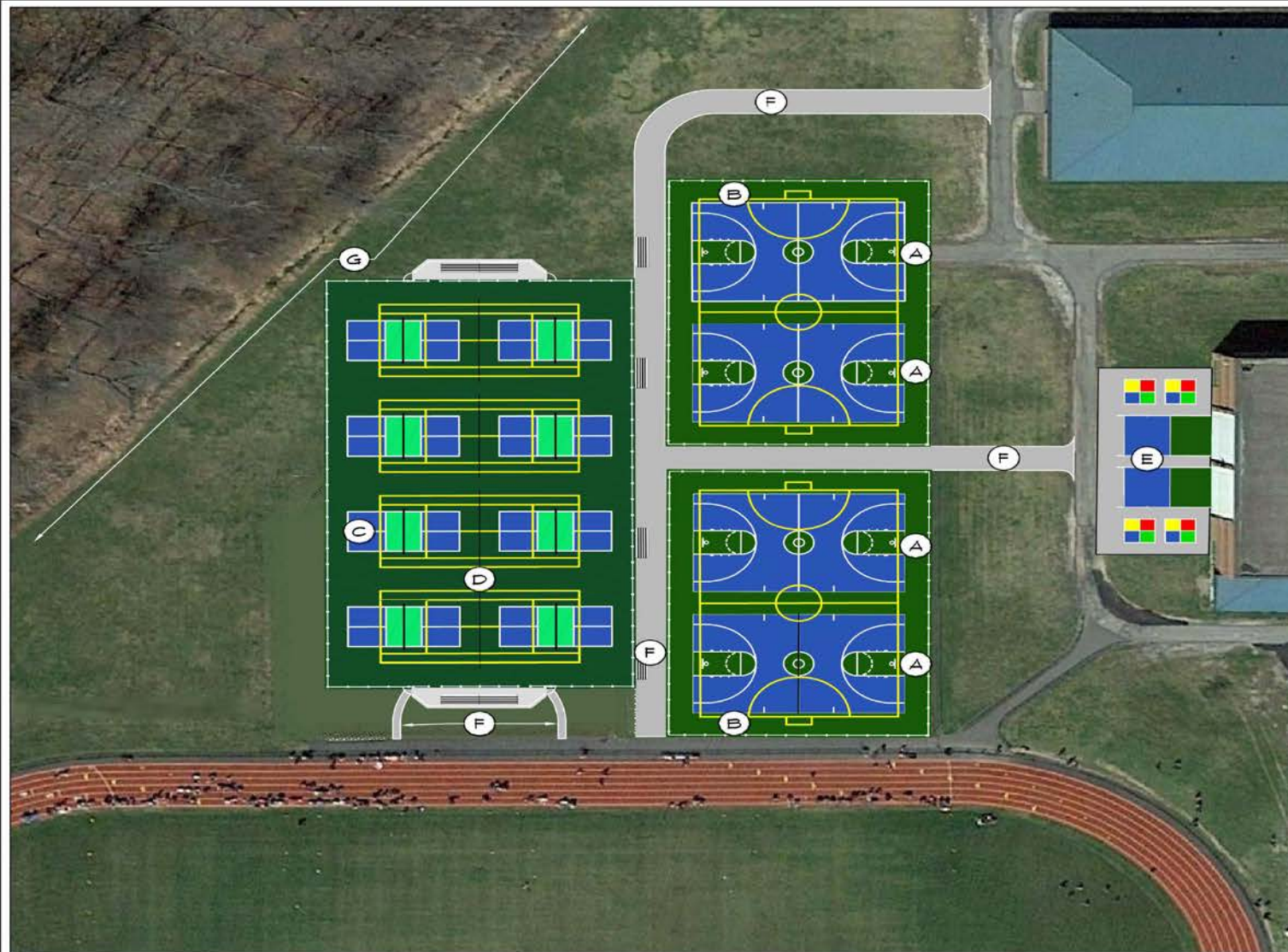
High School

- Entrance Flooring

Monhagen Play Area - Currently



Monhagen Play Area – Proposed



- (A) BASKETBALL COURT IMPROVEMENTS
 - RECONSTRUCTION OF THREE EXISTING BASKETBALL COURTS INCLUDING PERIMETER FENCING
 - CONSTRUCTION OF ONE ADDITIONAL BASKETBALL COURT
 - INSTALLATION OF THREE ROW BLEACHER SEATING ON WALKWAY BETWEEN COURT AREAS
 - NEW BASKETBALL STANDARDS W/GLASS BACKBOARDS, BREAKAWAY HOOPS AND PADDING ON POLES
- (B) SOCCER COURT IMPROVEMENTS
 - LINESTRIPING OF TWO MODIFIED "FUTSAL" LAYOUT SOCCER COURTS. COURTS TO OVERLAY ONTO BASKETBALL COURTS FOR MULTI-PURPOSE USE
- (C) PICKLEBALL COURT IMPROVEMENTS
 - CONSTRUCTION OF EIGHT NEW PICKLEBALL COURTS FOR P.E. CLASSES. COURTS TO OVERLAY ONTO TENNIS COURT LINESTRIPING FOR MULTI-PURPOSE USE.
- (D) TENNIS COURT IMPROVEMENTS
 - CONSTRUCTION OF FOUR NEW TENNIS COURTS INCLUDING PERIMETER FENCING
 - INSTALLATION OF THREE ROW BLEACHER SEATING
 - TENNIS NET POSTS TO BE REMOVEABLE
- (E) HANDBALL COURT IMPROVEMENTS
 - INSTALLATION OF ASPHALT PAVING AT EXISTING HANDBALL WALLS
 - LINESTRIPING OF FOUR SQUARE PLAY AREAS
- (F) CONNECTING WALKWAYS
 - INSTALLATION OF ASPHALT WALKS CONNECTING IMPROVED PLAY COURT AREA TO EXISTING PERIMETER WALKS
- (G) DRAINAGE
 - INSTALLATION OF UNDERDRAIN PIPE AT TOE OF EXISTING SLOPE



Presidential Park Site Repairs



LEGEND

- FULL DEPTH ASPHALT PAVEMENT REPLACEMENT AREA
- CRACK SEAL AND SEAL COAT ASPHALT PAVEMENT
- MILL, RECLAIM SUBBASE, AND REPAVE
- CONCRETE SIDEWALK INSTALLATION
- STORM AND FENCE AREA TO FACILITATE ONE-WAY TRAFFIC FLOW
- REPLACEMENT OR NEW INSTALLATION OF DRAINAGE STRUCTURE
- TOP / FRAME & GRATE REPLACEMENT OF EXISTING DRAINAGE STRUCTURE
- DRAINAGE PIPE INSTALLATION / REPAIR
- GRASS SWALE WITH UNDERDRAIN
- CONCRETE CURB INSTALLATION
- ADA ACCESSIBLE ROUTE REMEDIATIONS

NOTE:
This plan is prepared for use to develop a Probable Estimate of Construction Cost for ECSDM referendum purposes.

GRAPHIC SCALE
1" = 60'
1 inch = 60 ft.

NO.	DATE	REVISION	BY
INSITE ENGINEERING, SURVEYING & LANDSCAPE ARCHITECTURE, P.C. 3 Garrett Place Carmel, NY 12012 (845) 223-8880 (845) 223-9717 fax www.insite-nyc.com			
PROJECT ECSDM - PRESIDENTIAL PARK 50 ROOSEVELT AVE., CITY OF MIDDLETOWN, ORANGE COUNTY, NY			
DRAWING PRE-BOND CONCEPTUAL IMPROVEMENTS PLAN			
PROJECT NUMBER	19229.100	PROJECT MANAGER	J.M.W.
DATE	10-07-19	DRAWN BY	T.M.B.
SCALE	1" = 60'	CHECKED BY	Z.M.P.
DRAWING NO.			S-1
SHEET			1

Presidential Park 3-5 Play Ground



(A) PLAY STRUCTURE AREA

- CREATIVE PLAY STRUCTURE
- NET CLIMBER
- INDEPENDENT PLAY PIECE AND SPINNER
- PERIMETER BENCH SEATING
- POURED-IN-PLACE RUBBER SURFACING

(B) HARD SURFACE PLAY AREA

- TWO BASKETBALL KEYS
- TWO FOUR SQUARE AREAS
- TRIPLE HOPSCOTCH AREAS
- PICNIC BENCH WITH SHADE CANOPY ABOVE

(C) WALKING TRACK

- TWO LANE ASPHALT PAVED PERIMETER WALKING TRACK

(D) CROSSWALK

- PAINTED CROSSWALK TO PROVIDE SAFE TRAVEL PATH ACROSS BUS DROP-OFF AREA

(E) LANDSCAPING

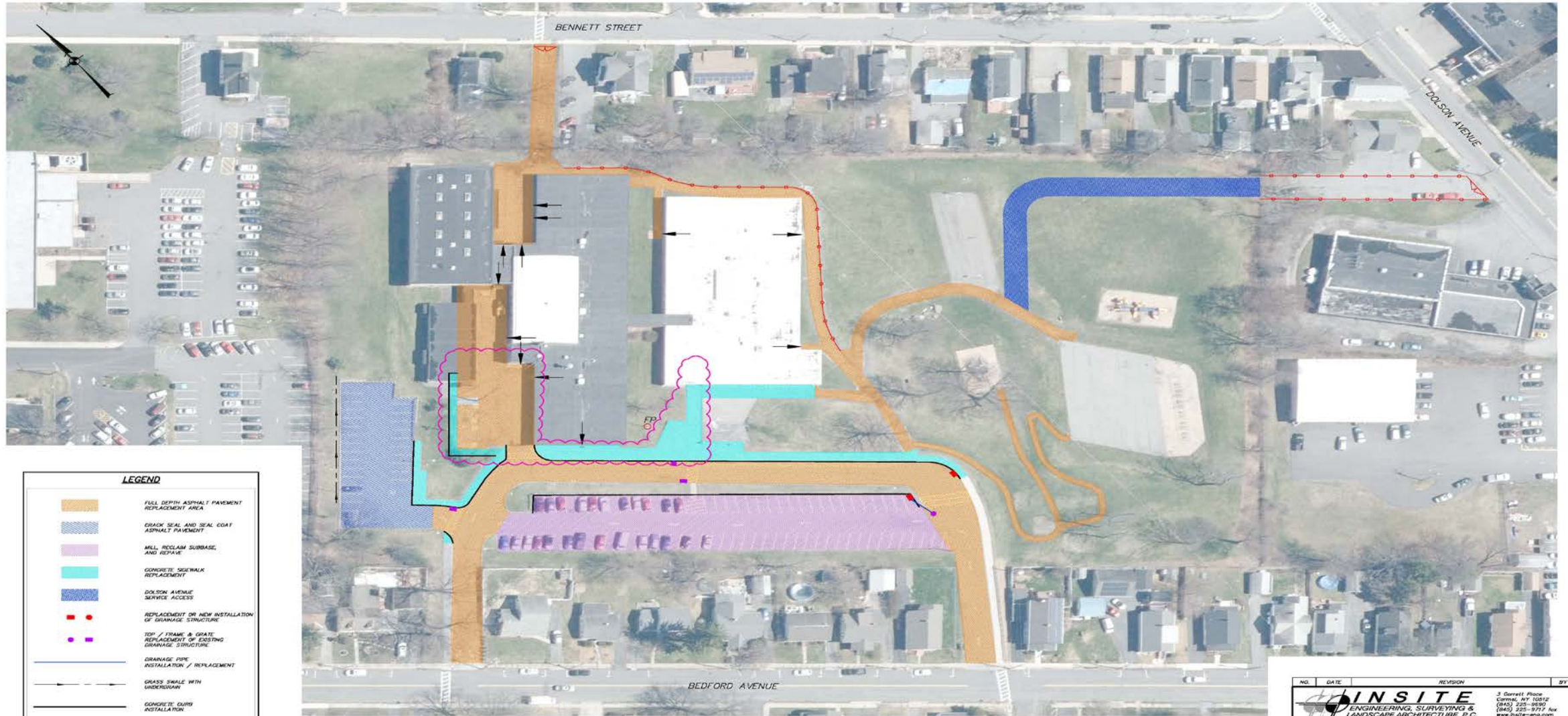
- TREES AND SHRUB PLANTING

(F) FENCING

- FOUR FOOT HEIGHT FENCING AT PERIMETER OF NEW PLAY AREA



Maple Hill Annex at Truman Moon



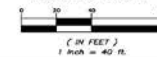
LEGEND

	FULL DEPTH ASPHALT PAVEMENT REPLACEMENT AREA
	CRACK SEAL AND SEAL COAT ASPHALT PAVEMENT
	MILL, RECLAIM, SUBBASE, AND REPAVE
	CONCRETE SIDEWALK REPLACEMENT
	DOLSON AVENUE SERVICE ACCESS
	REPLACEMENT OR NEW INSTALLATION OF DRAINAGE STRUCTURE
	TOP / FRAME & GRATE REPLACEMENT OF EXISTING DRAINAGE STRUCTURE
	DRAINAGE PIPE INSTALLATION / REPLACEMENT
	GRASS SHALE WITH UNDERDRAIN
	CONCRETE CURB INSTALLATION
	CHAIN LINK FENCE REMOVAL AND REPLACEMENT
	NEW RAMP FOR EGRESS DOOR
	ADA ACCESSIBLE ROUTE REMEDIATIONS

NOTE:

This plan is prepared for use to develop a Probable Estimate of Construction Cost for ECSDM referendum purposes.

GRAPHIC SCALE

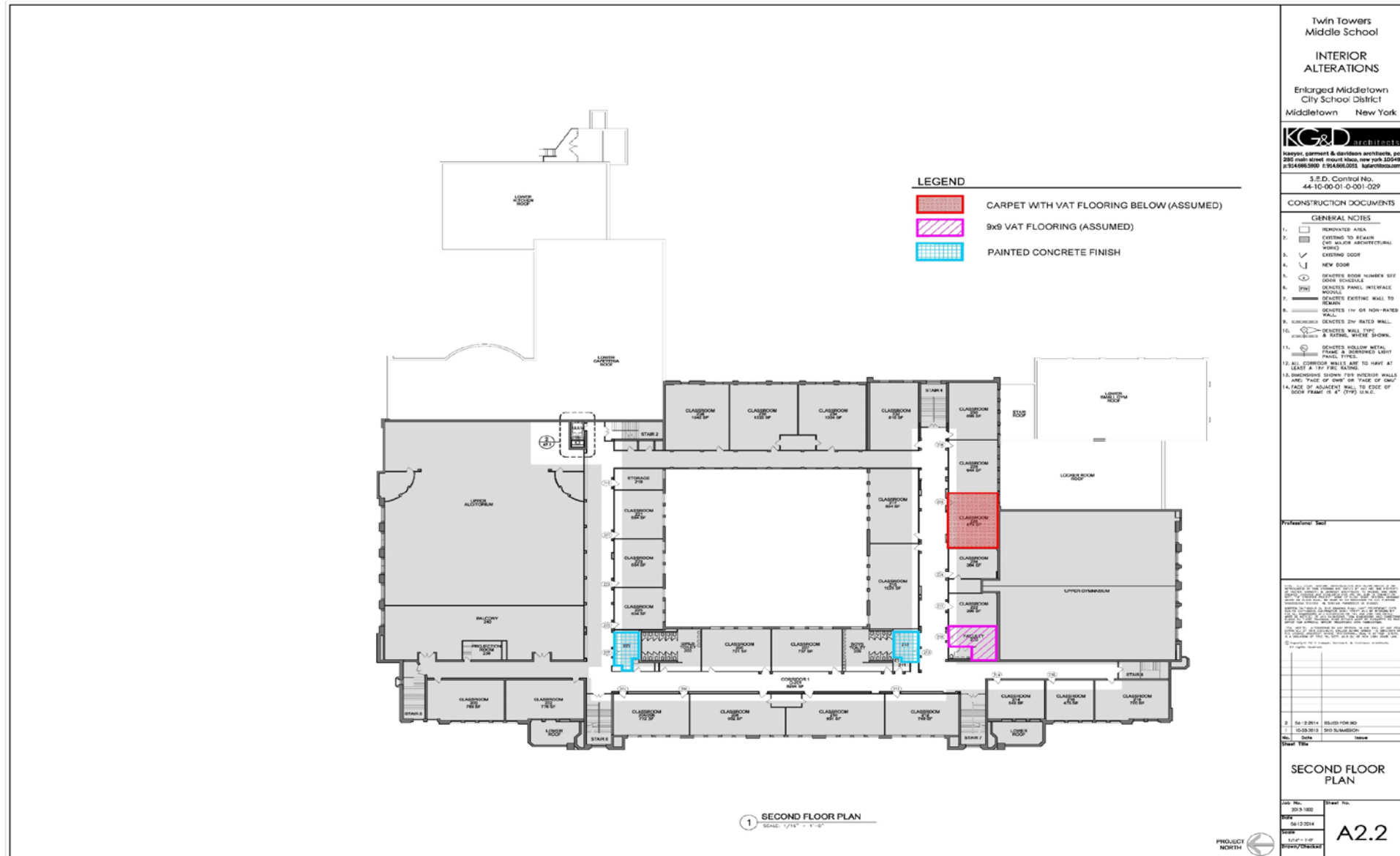


ALTERATION OF THIS DOCUMENT, UNLESS UNDER THE DIRECTION OF A LICENSED PROFESSIONAL ENGINEER, IS A VIOLATION OF SECTION 2009 OF ARTICLE 140 OF THE EDUCATION LAW.

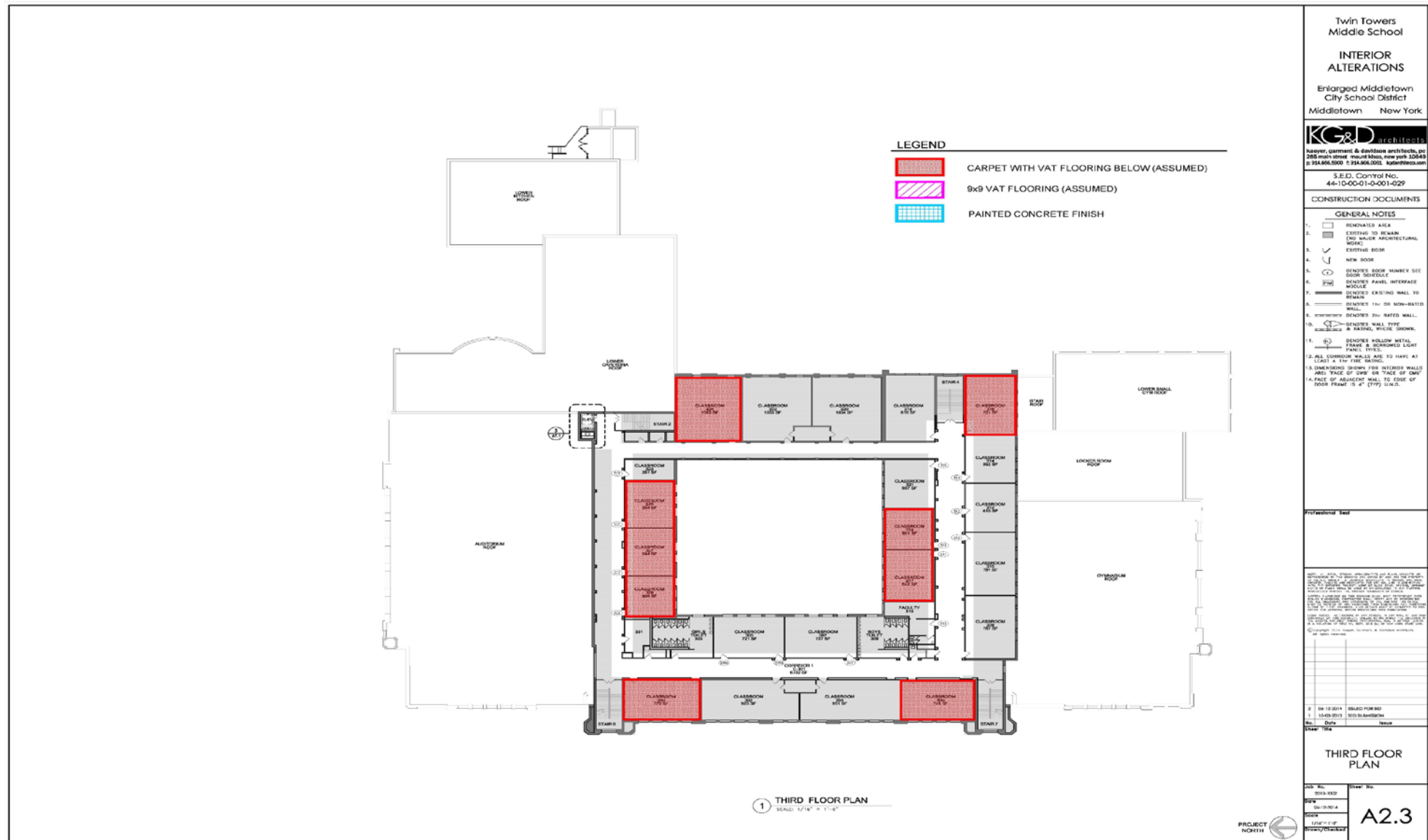
NO.	DATE	REVISION	BY
PROJECT: ECSDM - TRUMAN MOON 53 BEDFORD AVE, CITY OF MIDDLETOWN, ORANGE COUNTY, NY			
DRAWING: PREF BOND CONCEPTUAL IMPROVEMENTS PLAN			
PROJECT NUMBER	19229.100	PROJECT MANAGER	J.M.W.
DATE	10-07-19	DRAWN BY	T.M.B.
SCALE	1" = 40'	CHECKED BY	Z.M.P.
DRAWING NO.	S-1	SHEET	1 / 1

3 Corvett Place
 Cortland, NY 13812
 (607) 255-9590
 (607) 255-9717 fax
 www.insite-eng.com

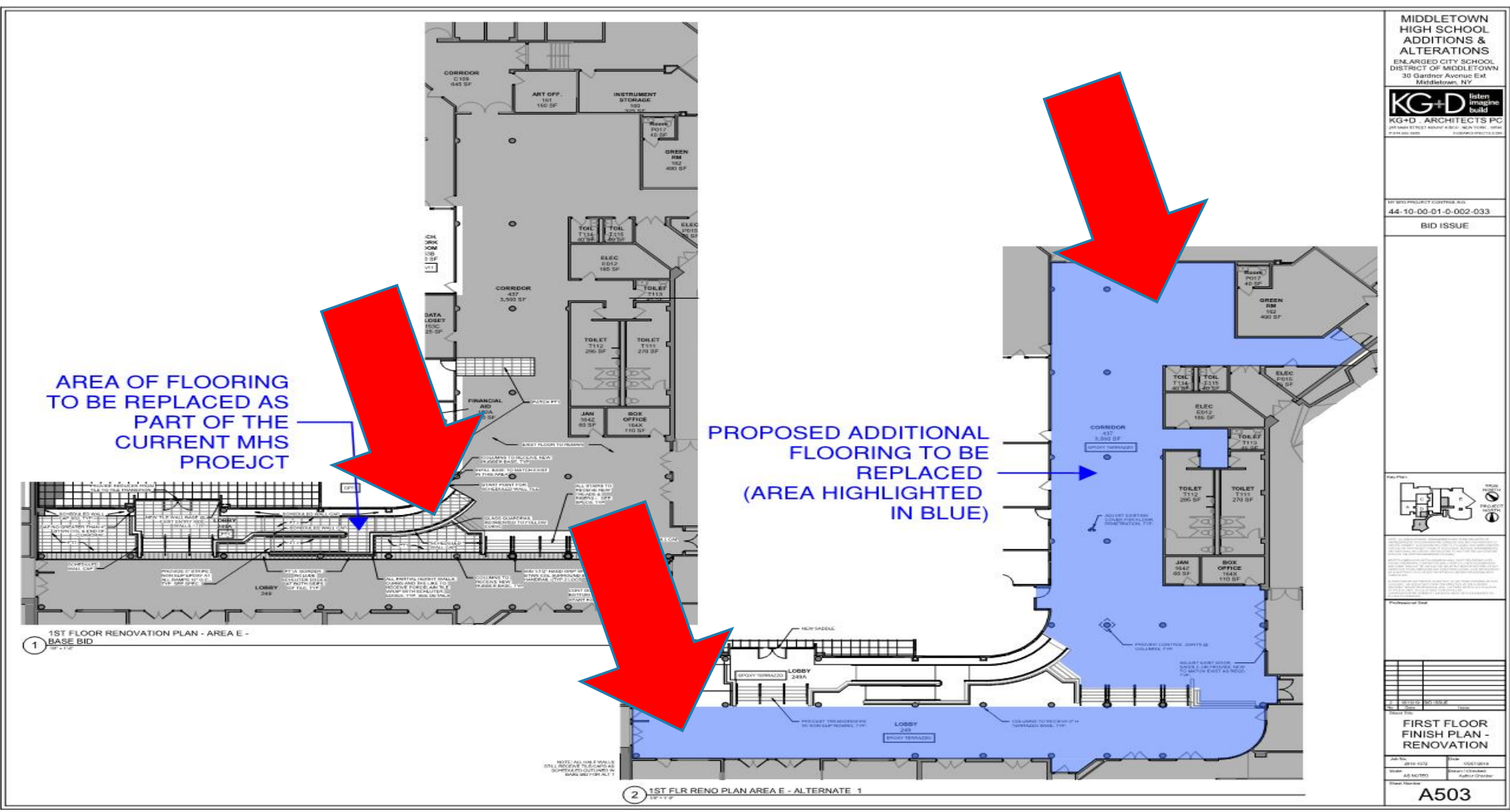
Twin Towers Flooring 2ndst Floor



Twin Towers Flooring 3rd Floor



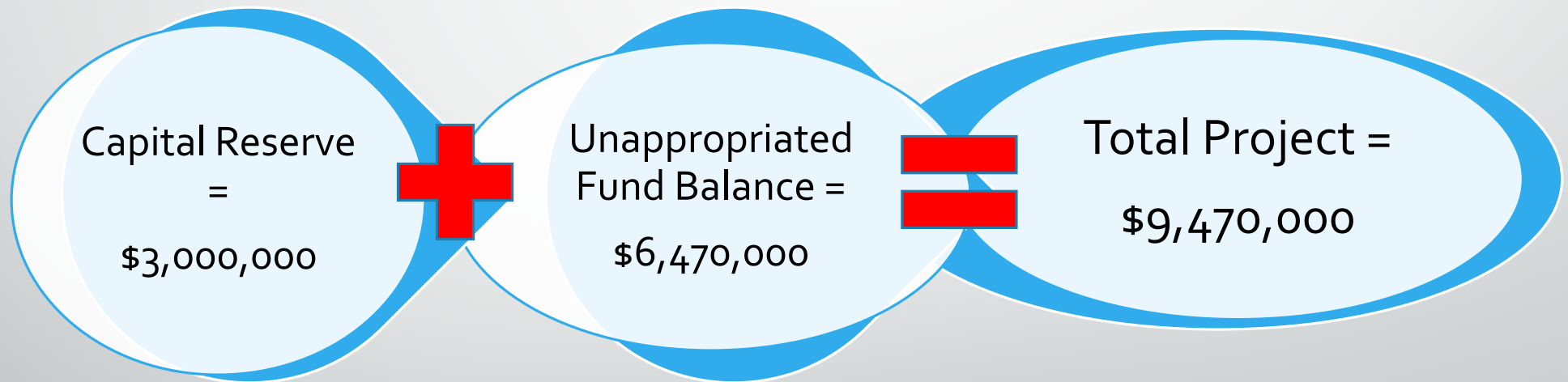
High School Flooring



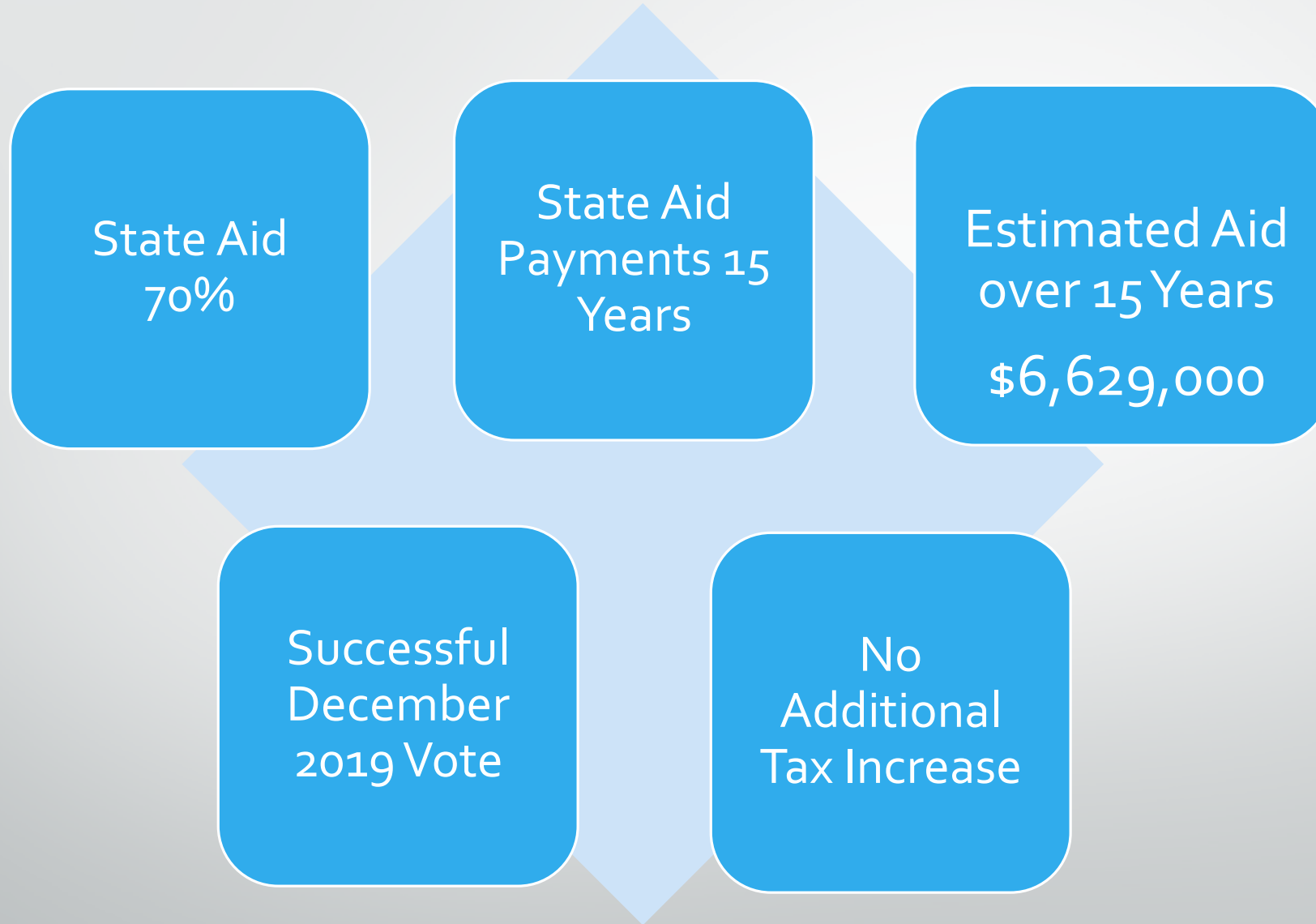
Estimated Project Expenses

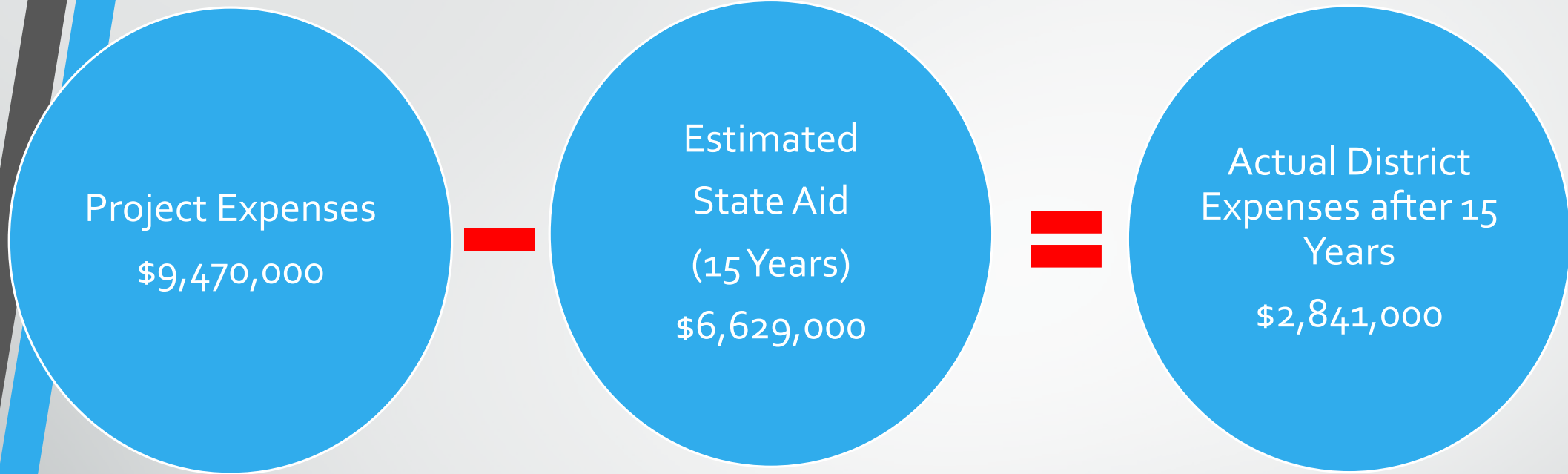
<i>Monhagen Middle School</i>	
Basketball & Multi-sport Play Areas	\$ 1,545,000
Handball Court	\$ 135,000
Dehumidification - Controls Upgrades	\$ 400,000
<i>Presidential Park Elementary School</i>	
Pavement Repairs & Traffic Control	\$ 1,775,000
New 3-5 Playground in Bus Loop Area	\$ 1,350,000
Existing Play Area Surfacing Improvements	\$ 100,000
Access Control System Upgrades	\$ 150,000
<i>Maple Hill Elementary School</i>	
Dehumidification - Controls Upgrades	\$ 540,000
<i>Maple Hill Annex at Truman Moon</i>	
Paving and Walkway Improvements	\$ 1,675,000
Site Lighting Upgrades	\$ 295,000
Playground Improvements	\$ 155,000
Create Emergency Access to Lower Field at Dolsen Ave	\$ 55,000
Access Control System Upgrades	\$ 75,000
<i>Twin Towers Middle School</i>	
Classroom Carpeting and replace w/Resilient Flooring	\$ 760,000
<i>High School</i>	
Main Lobby Floor Tile Replacement	\$ 460,000
<i>Total Project Referendum</i>	\$ 9,470,000

Funding Sources



Project Assumptions





Estimated Funding Payments



Referendum Date

December 10, 2019

Thank you